

STATE OF ARKANSAS
STATE HIGHWAY COMMISSION

FISCAL YEAR	State Job	SHEET NO.	TOTAL SHEETS	FED. DIST. NO.	STATE	U.S. PROJ. NO.	FISCAL YEAR	SHEET NO.	TOTAL SHEETS
1934	5162	1	16	6	ARK.	NRH5D	1934	1	13

FED. DIST. NO.	STATE	U.S. PROJ. NO.	FISCAL YEAR	SHEET NO.	TOTAL SHEETS
6	ARK.	NRH242B	1934	33	33

Sheet No.	NRH 5-D	NRH 242-B	State Job 5162
1			
2			
3			
4			
5			
6			
7			
8			
9			
10			
11			
12			
13			
14			
15			
16			

INDEX OF SHEETS

Sheet No.	NRH 5-D	NRH 242-B	State Job 5162	Drawg. No.	Description
1				3825	Title Sheet
2				3826	Layout Br. # 1888 & #1892
3				3827	" " # 1890 & #1891
4				3828	" " # 1892 (Cache River)
5				3829	" " # 1893 (Eight Mile Creek)
6				2158	Details Std. 25' I-Bm, 24' Cl. Rdy., Pile Bents.
7				2179	" " 45' I-Bm, 27' Cl. Rdy., "
8				3830	Conc. Pile Bents & Bear. Pls. (Br. #1892)
9				3831	Piers (Br. #1892)
10				3832	45' I-Bm, 24' Rdy., 45° Skew (Appr. to Br. #1892)
11				3833	45' I-Bm, 24' Rdy., 45° Skew Adj. Steel Truss (Br. #1892)
12				3546	Std. 100' Low Truss, 24' Rdy. (Br. #1892)
13				3547	Special Details 100' Low Truss for 45° Skew. (Br. #1892)
14				3834	Details Abutments Br. #1893
15				3543	Std. 80' Low Truss, 24' Rdy. (Br. #1893)
16				2386	Bronze Project Marker Pls. & Bronze State Br. Name Plates.

PLAN OF PROPOSED BRIDGES
WALNUT RIDGE - PARAGOULD
LAWRENCE AND GREENE
COUNTIES

ROUTE 25 SEC. 7 & 8

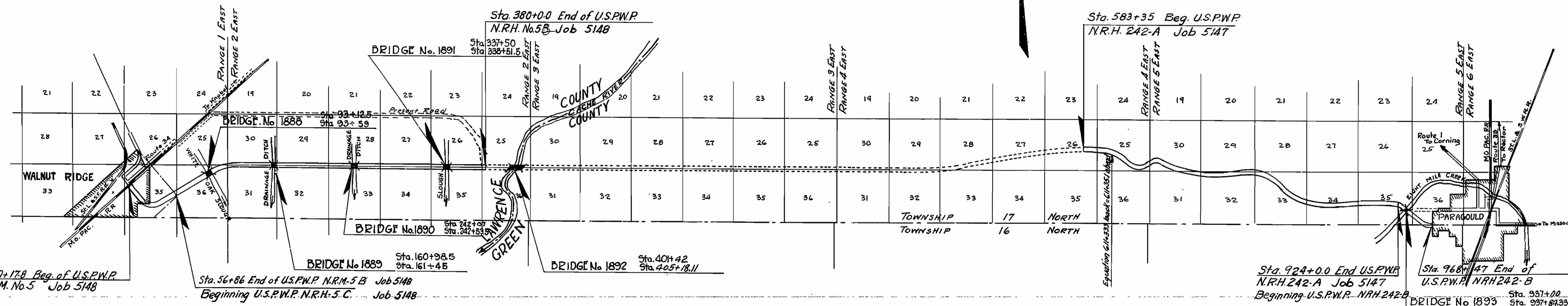
JOB NO 5162

U. S. PUBLIC WORKS PROJECT NO. NRH5D
NRH242B

LIMITS OF PROJECT : ENDS OF BRIDGES AS SHOWN BELOW.

QUANTITIES

Item No.	Item	Unit	NRH5-D	NRH242-B	Total
13	Dry Excavation for Structures	Cu. Yds.	171	437	608
13	Wet Excavation for Structures	Cu. Yds.	244	338	582
91	Seal Concrete for Bridges	Cu. Yds.	74.52	0	74.52
91	Class "A" Concrete for Bridges	Cu. Yds.	207.74	274.92	482.66
91	Class "S" Concrete for Bridges	Cu. Yds.	581.15	59.59	640.74
92	Reinforcing Steel for Bridges	Lbs.	134,101	46,418	180,519
93	Concrete Piling	Lin. Ft.	2566	0	2566
94	Concrete Piling for Bridges	Lin. Ft.	1072	0	1072
96	Structural Steel in Truss Spans	Lbs.	129,970	83,117	213,087
96	Structural Steel in Beam Spans	Lbs.	306,803	0	306,803
98	Untreated Timber Piling	Lin. Ft.	1548	2160	3708
SP	Cast Steel & Cast Iron	Lbs.	3908	0	3908
SP	Bronze Project Marker Plates	Each	10	0	10
SP	Bronze State Bridge Name Pls.	Each	10	2	12
SP	Removal of Present Bridges	Lump Sum	Lump Sum	Lump Sum	Lump Sum



NOTE: ROAD AND GRADING TO BE CONSTRUCTED UNDER STATE JOBS NO. 5147 & 5148.

U.S.P.W. Proj. N.R.H. 5-D - Bridges No. 1888, 1889, 1890, 1891, 1892
U.S.P.W. Proj. N.R.H. 242-B - Bridge No. 1893

Revised Quantities 6/2/34 L.R.C.

Specifications approved by Chief, Bureau of Public Roads, September 28, 1925, and adopted by State Highway Commission May 30, 1925 with revisions and Special Provisions as follows:

REVISIONS

Pamphlet	Revised	Date	Approved
A	Revised	MAR. 1st, 1931	Approved June 13, 1931
L	Revised	FEB. 10, 1933	
M	Revised	MAR. 1, 1931	Approved June 13, 1931
N	Revised	OCT. 1st, 1933	
O	Revised	OCT. 1st, 1933	
P	Revised	OCT. 1st, 1933	

SPECIAL PROVISIONS

Item	No. of Sheets	Date
Sub-letting, Labor & NRA Code Compliance	13	13
Beginning & Prosecution of Work	1	1
Engineers Field Office	1	8-23-33
Bronze Proj. Marker Pls. & Bronze State Br. Name Pls.	1	8-10-33
Cast Steel & Cast Iron	1	12-5-33
Removal of Present Bridges	2	6-7-34

LAYOUT

Scale: 1 Inch = 1 Mile

	N.R.H. 5-D	N.R.H. 242-B	Job 5162
LENGTH OF PROJECT	= 617.11 Ft. = 0.116 Miles	84.33 Ft. = 0.015 Miles	
LENGTH OF BRIDGES	= 617.11 Ft. = 0.116 Miles	84.33 Ft. = 0.015 Miles	
LENGTH OF EMBANKMENT	= 0	0	
LENGTH OF JOB	=		701.44 Ft. = 0.132 Miles

M.B. Lawrence
BRIDGE ENGINEER

BRIDGES NO. 1888 TO 1893 INCL. DRAWING NO. 3825

APPROVED

CHIEF ENGINEER - U. S. BUREAU OF PUBLIC ROADS

APPROVED

DISTRICT ENGINEER - U. S. BUREAU OF PUBLIC ROADS

APPROVED

CHIEF - U. S. BUREAU OF PUBLIC ROADS

APPROVED

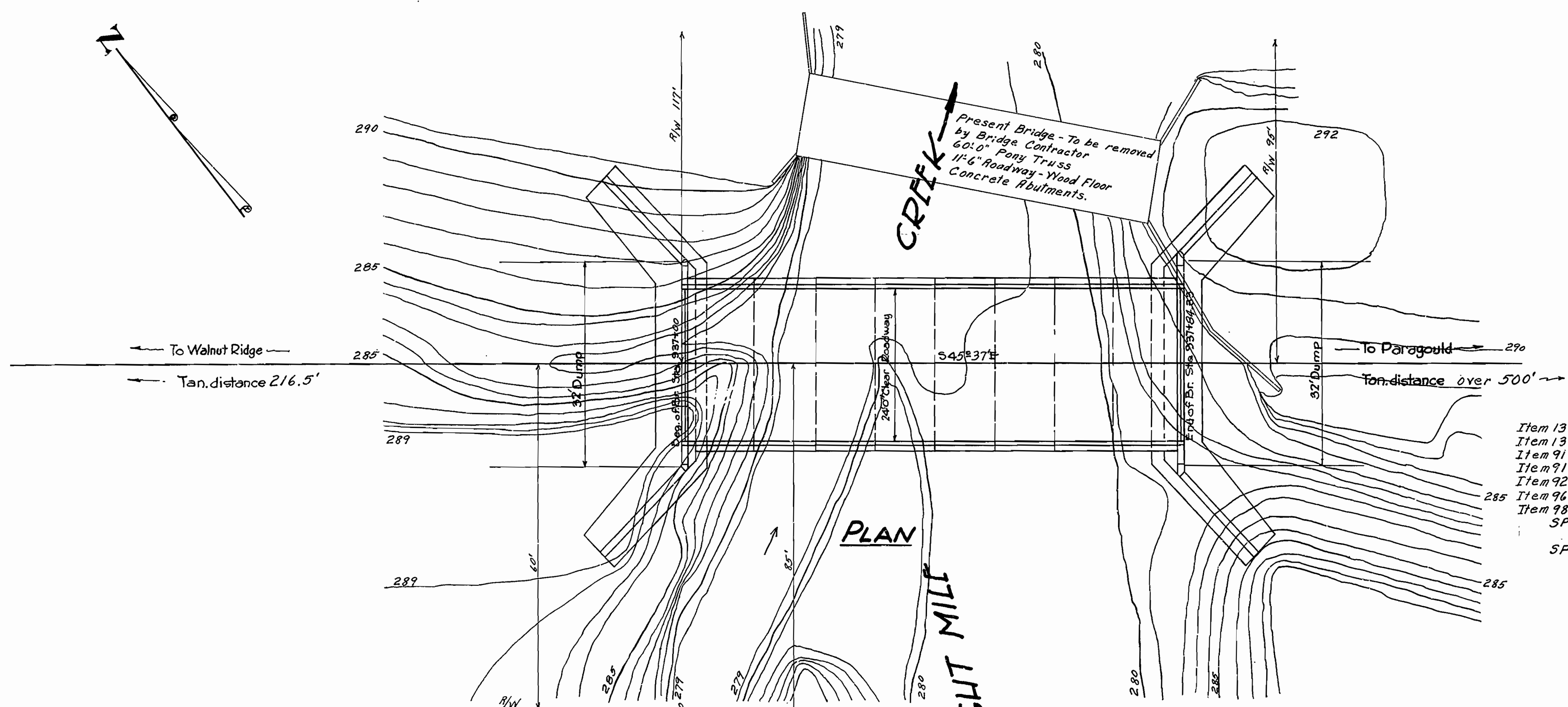
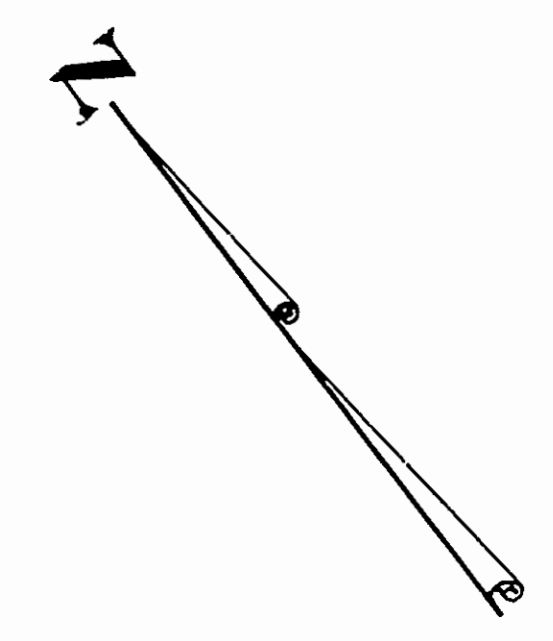
CHAIRMAN - STATE HIGHWAY COMMISSION

APPROVED

STATE HIGHWAY ENGINEER

Fed. Road Dist. No.	State	U.S.P.W. Proj. No.	Fiscal Year	Sheet No.	Total Sheets
6	Ark.	NRH242B	1934	30	33

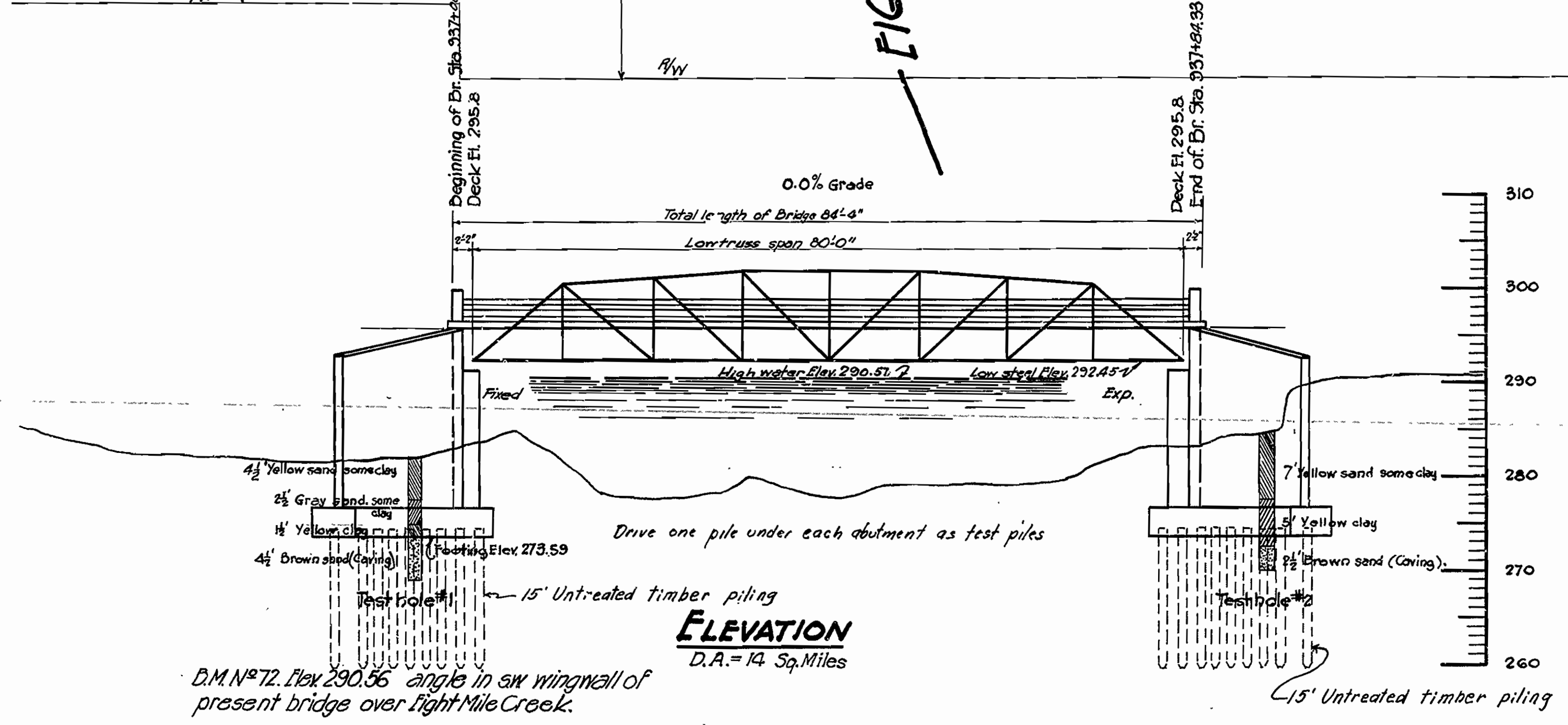
Fiscal Year	STATE JOB NO	SHEET NO	TOTAL SHEETS
1934	5162	5	17



QUANTITIES

Item 13 Dry Excavation for Structures	437 cu yds
Item 13 Wet Excavation for Structures	338 cu yds
Item 91 Class "A" Concrete for Bridges	2749.2 cu yds
Item 91 Class "S" Concrete for Bridges	59.59 cu yds
Item 92 Reinforcing Steel for Bridges	46418.0 lbs.
Item 96 Structural Steel in Truss Spans	83117.0 lbs.
Item 98 Untreated Timber Piling	2160.0 lin. ft.
SP Bronze State Bridge Name Plates	2 Each
SP Removal of Present Bridge	Lump Sum

General Notes:
 For details of 80' Low Truss Span see Drwg. No. 3543.
 For details of Abutments see Drwg. No. 3834.
 Lengths of piling shown are for estimating quantities only.
 Actual lengths are to be determined in the field.
 Maximum design load on pile 15 tons.
 Volume occupied by embedded pile heads is not included in pay quantities for Class "A" concrete.
 All exposed corners of concrete work to have $\frac{3}{4}$ " chamfer unless otherwise noted.
 Shop lists and bending diagrams of reinforcing steel must be submitted and approved before fabrication is begun.
 Specifications: Arkansas Standard Road and Bridge Specifications adopted May 30th 1925 and Revised.



D.M. N^o 72. Elev 290.56 angle in sw wingwall of present bridge over Fight Mile Creek.

Revised Quantities 620-34 BY Test Pile note 6-11-34 L.P.C.

**LAYOUT OF
 BRIDGE AT FIGHTMILE CREEK
 WALNUT RIDGE - PARAGOULD ROAD
 GREENE COUNTY**

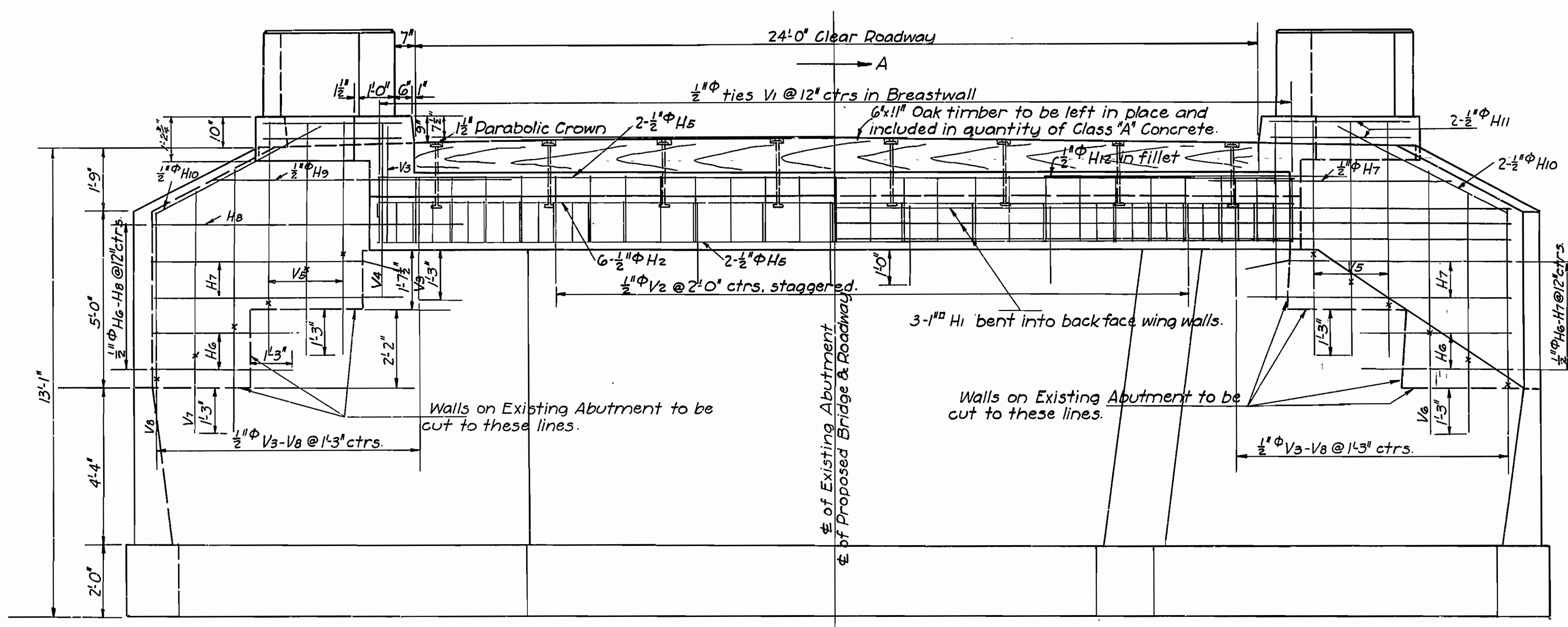
**ROUTE 25 SEC. 8
 ARKANSAS STATE HIGHWAY COMMISSION
 LITTLE ROCK, ARK.**

Drawn By: WTM Date: 3-24-34
 Traced By: P.E.B. Date: 4-2-34
 Checked By: _____ Date: _____
BRIDGE No. 1893 DRAWING No. 3829

N.R. Sawyer
 BRIDGE ENGINEER

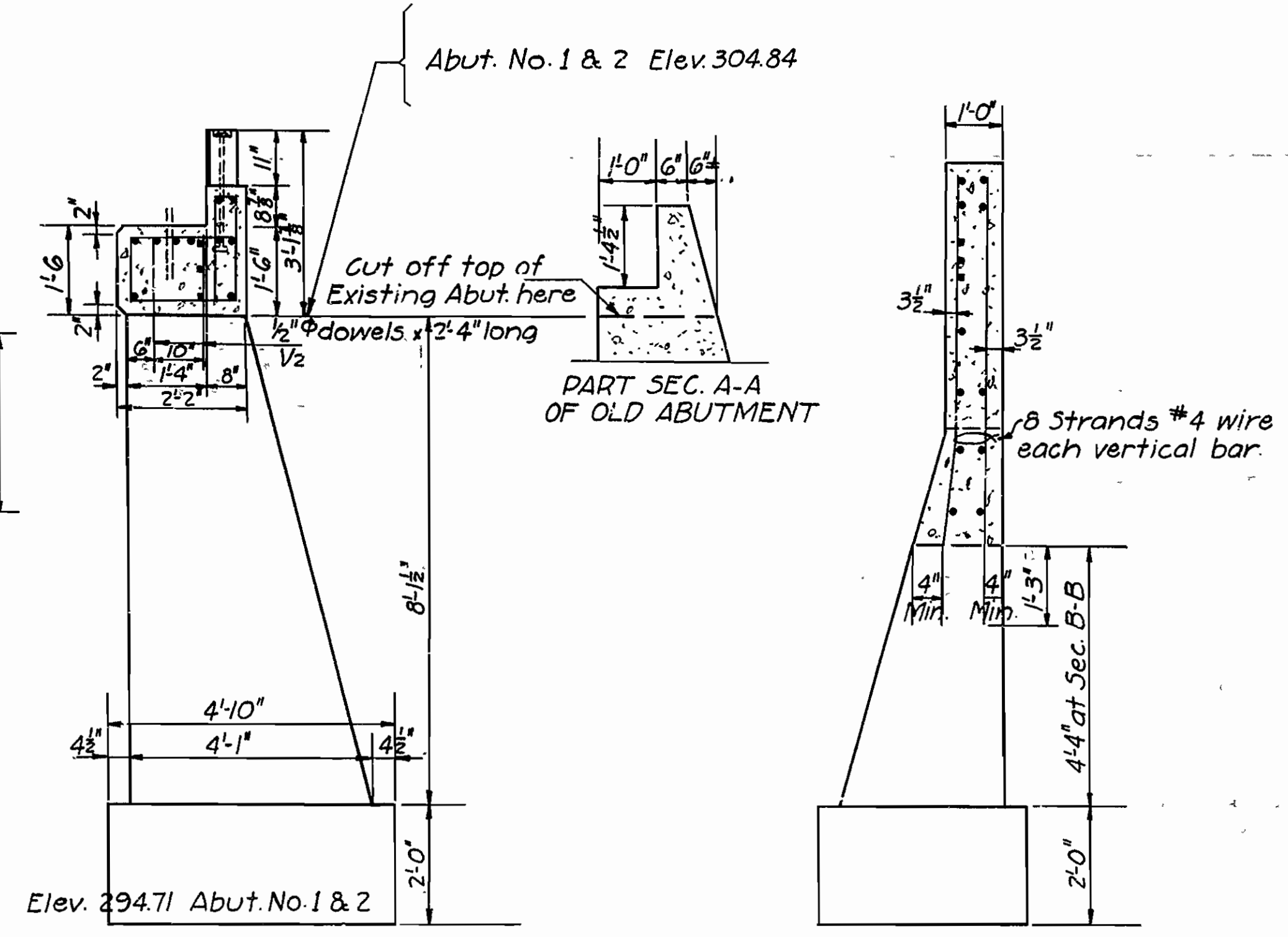
FED. ROAD DIST. NO.	STATE	U.S. HWY PROJECT NO.	FISCAL YEAR	SHEET NO.	TOTAL SHEETS
6	ARK.	N.R.H. 166-D	1935	7	11

JOB NO. 3158
Sheet 10 of 31



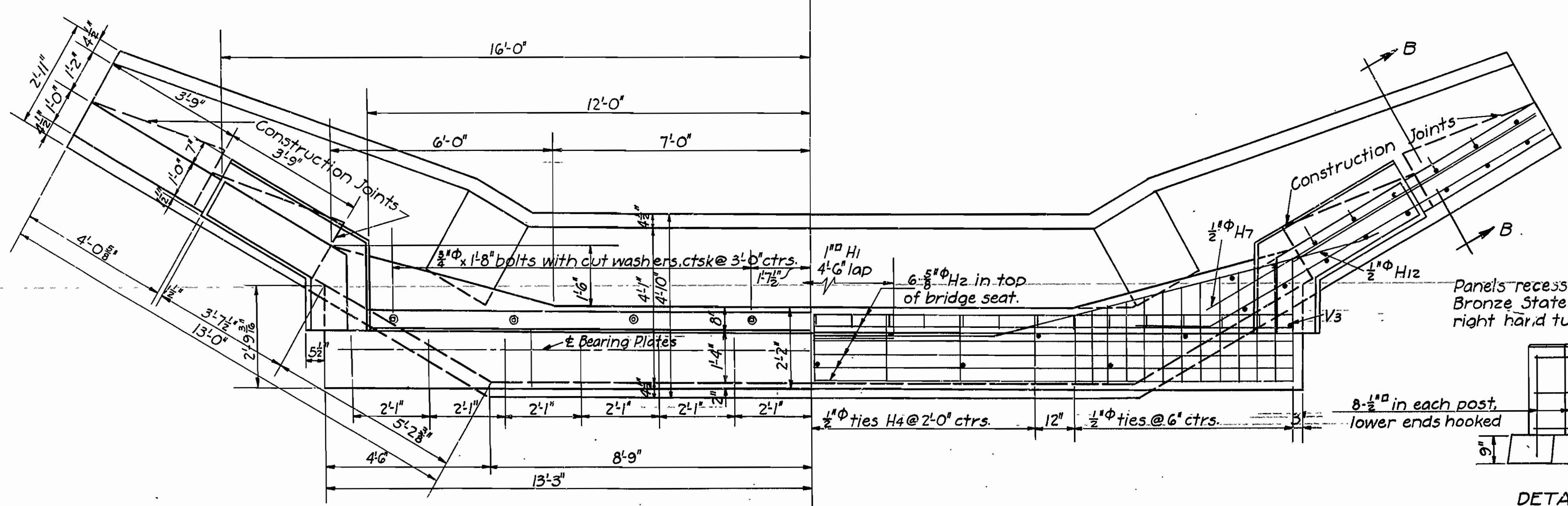
HALF ELEVATION
Showing Front Face Reinforcement

HALF ELEVATION
Showing Back Face Reinforcement



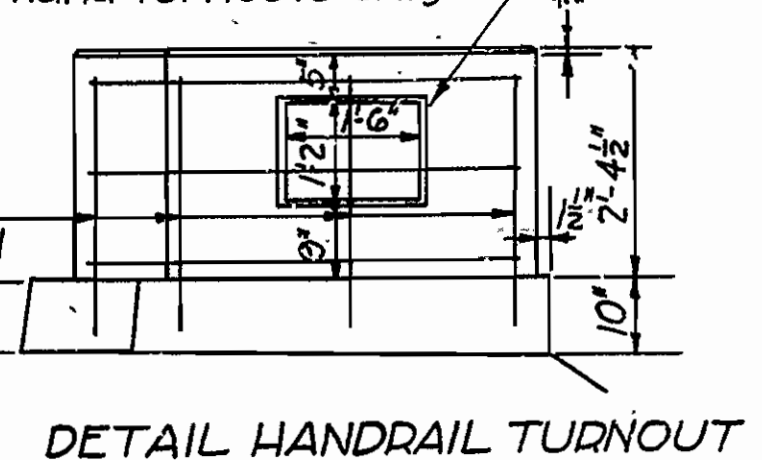
SECTION A-A

SECTION B-B



DIMENSIONED HALF PLAN

HALF PLAN
Showing Wing and Breast Wall Reinforcement



DETAIL HANDRAIL TURNOUT

LIST OF BENT BARS				
Mark	Size	Length	Bending Diagram	
H1	1"φ	22'-9"	3.75	H1
H2	5/8"φ	27'-3"	7.0	H2
H4	1/2"φ	6'-8"	H4, V1	
V1	1/2"φ	5'-4"	H4 1'-9 1/2"	V1
H11	1/2"φ	13'-6"	H4 1'-10"	H11
H9	1/2"φ	10'-0"	8'-0"	H9
H3	1/2"φ	Av. 8'-2"	Var by 1/2" from 1'-9 1/2" to 3'-3 1/2"	

General Notes
Dimensions shown are general only. Detail dimensions are to be secured and verified in the field before construction is begun, and before shop drawings for reinforcing and structural steel are made.
All concrete to be Class 'A'. All exposed corners to have 3/4" chamfers unless otherwise noted.
For details of Superstructure see Drwg No. 3841

DETAILS OF ABUT'S NO. 1 & NO. 2
LICK CREEK BRIDGE
LITTLE RIVER COUNTY
ROUTE 71 SEC. 4

ARKANSAS STATE HIGHWAY COMMISSION
LITTLE ROCK, ARK.

Drawn by: W.C.H. Date: 6-16-34
Traced by: A. Date: 7-7-34 Scale: 1/2" = 1'-0"
Checked by: Date:

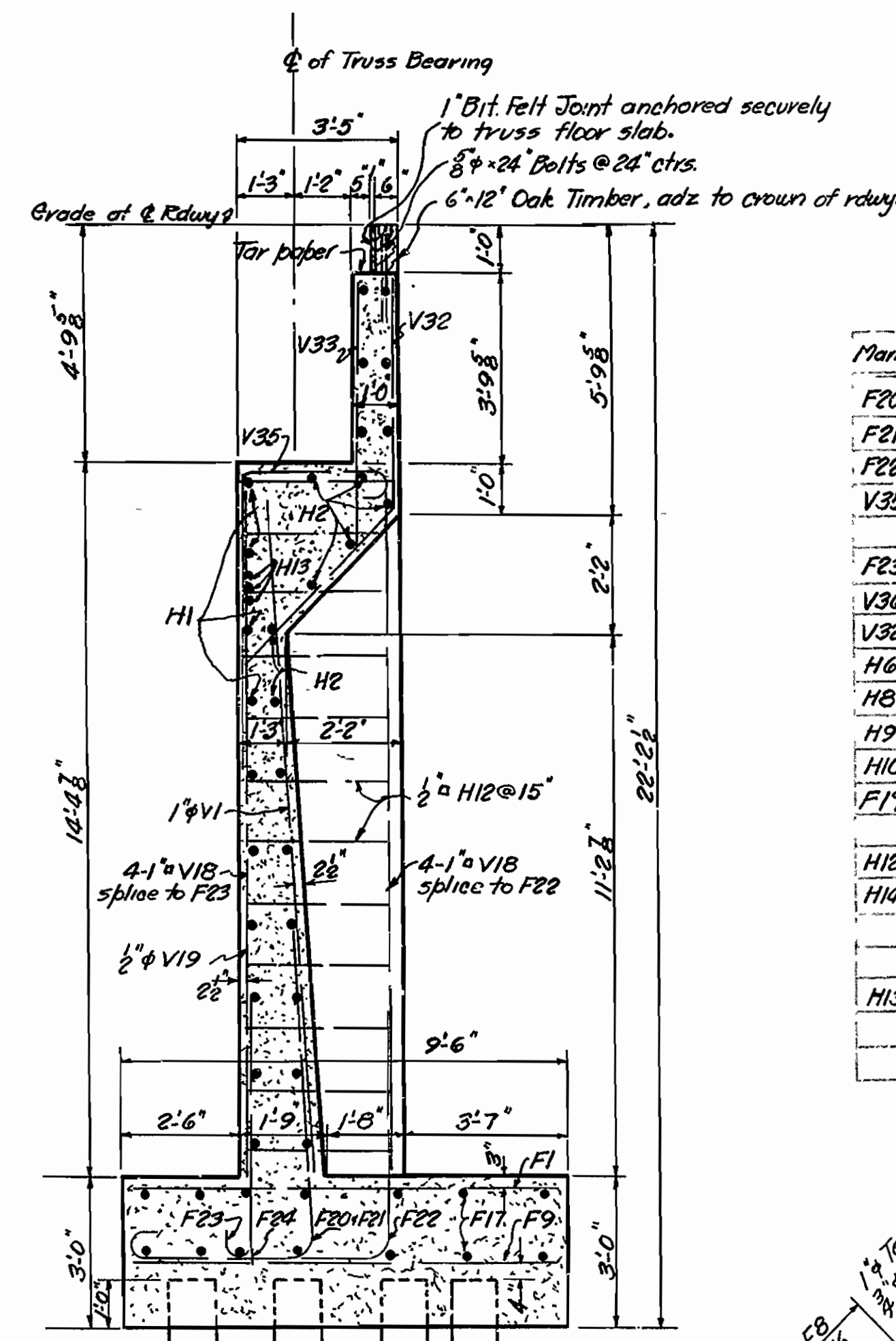
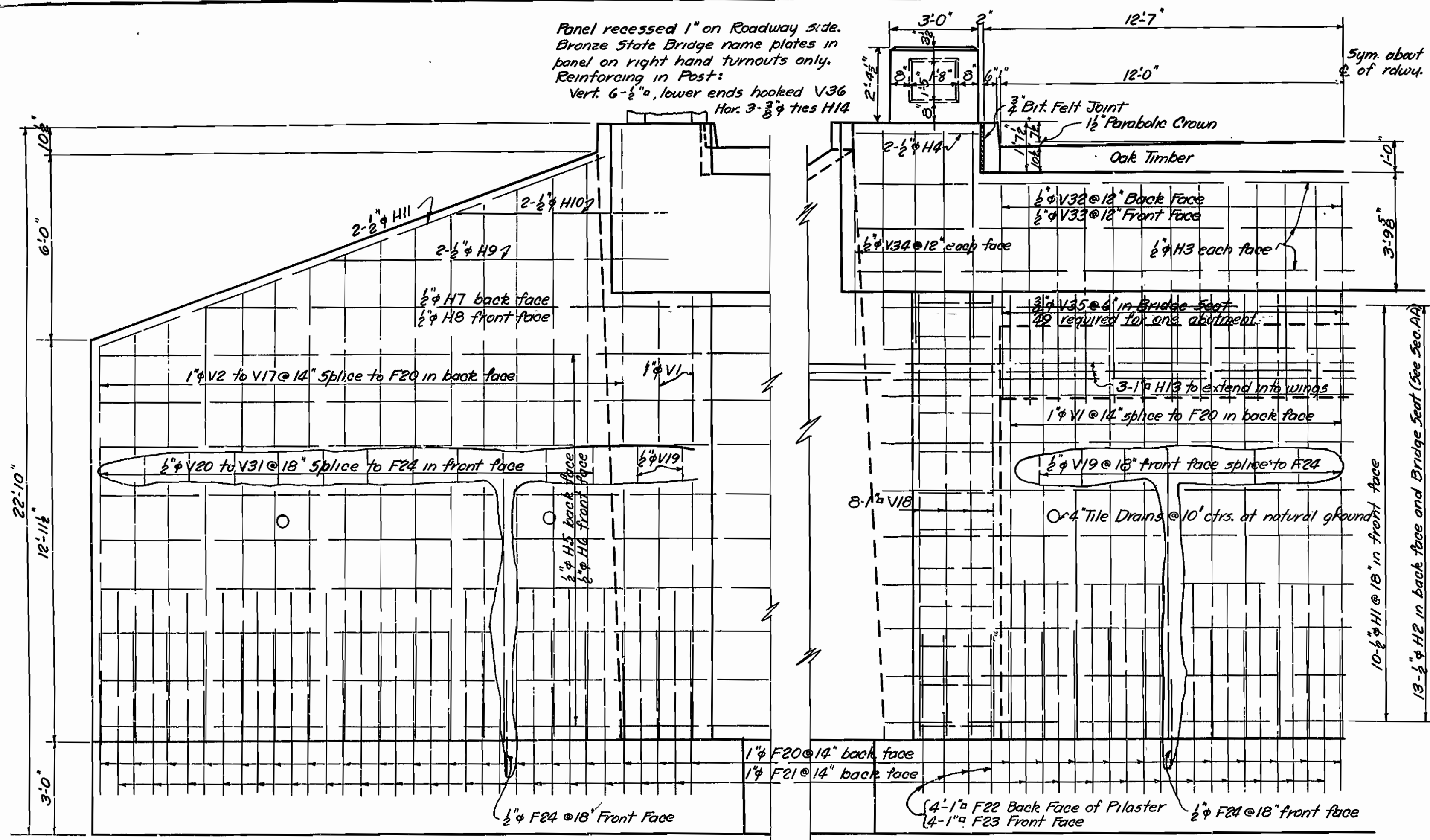
BRIDGE NO. 1837

DDWG NO. 3843

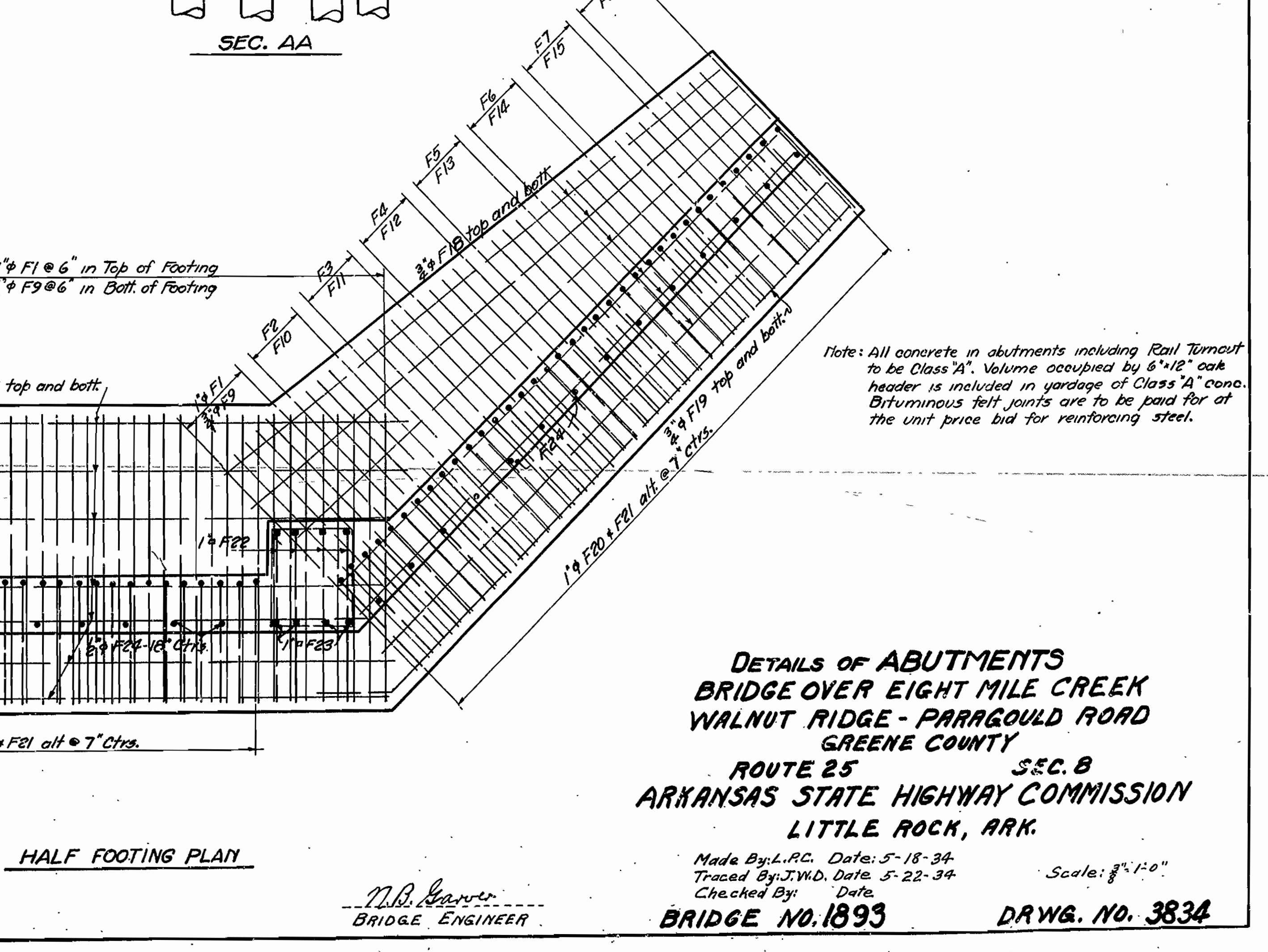
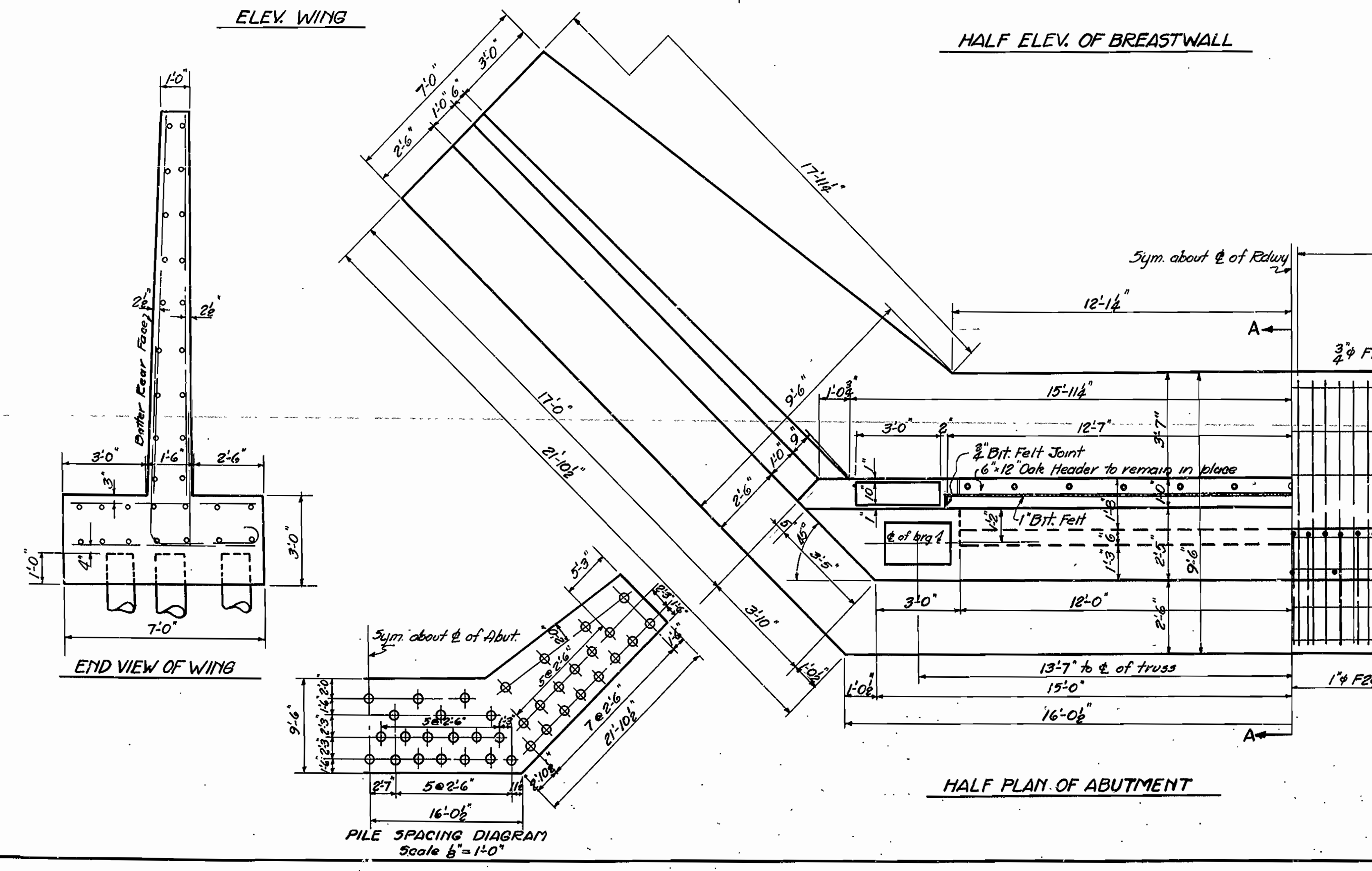
W.C. Haver
Bridge Engineer

FED. RD DIST. NO.	STATE	U.S. HW. PROJECT NO.	FISCAL YEAR	SHEET NO.	TOTAL SHEETS
6	ARK.	NRH 212B	1934	31	33

FISCAL YEAR	State Job No.	SHEET NO.	TOTAL SHEETS
1934	51G2	14	17



Mark	Size	Lgth	A	B	Bending Diagram
F20	1" ϕ	9'-6"	3'-7"	5'-0"	[Bending Diagram for F20-F24]
F21	1" ϕ	11'-3"	3'-7"	6'-9"	
F22	1" ϕ	11'-3"	5'-4"	5'-0"	
V35	3" ϕ	9'-5"	3'-0"	6'-0"	
F23	1" ϕ	6'-0"	5'-0"	0'-8"	[Bending Diagram for F23-F24]
V36	3" ϕ	3'-10"	3'-4"	0'-4"	
V32	3" ϕ	8'-9"	4'-6"	4'-9"	[Bending Diagram for V32-V35]
H6	1" ϕ	22'-6"	20'-6"	2'-0"	
H8	1" ϕ	19'-6"	17'-6"	2'-0"	
H9	1" ϕ	12'-0"	10'-0"	2'-0"	
H10	1" ϕ	7'-6"	5'-6"	2'-0"	[Bending Diagram for H6-H10]
F19	3" ϕ	23'-9"	21'-3"	2'-6"	
H12	1" ϕ	12'-0"	3'-0"	2'-7"	[Bending Diagram for H12-H14]
H14	3" ϕ	7'-0"	0'-5"	2'-8"	
H13	1" ϕ	30'-0"	18'-3"	11'-9"	[Bending Diagram for H13]



DETAILS OF ABUTMENTS
BRIDGE OVER EIGHT MILE CREEK
WALNUT RIDGE - PARAGOULD ROAD
GREENE COUNTY
ROUTE 25 SEC. B
ARKANSAS STATE HIGHWAY COMMISSION
LITTLE ROCK, ARK.

M.B. Garrow
 BRIDGE ENGINEER